



2+



10



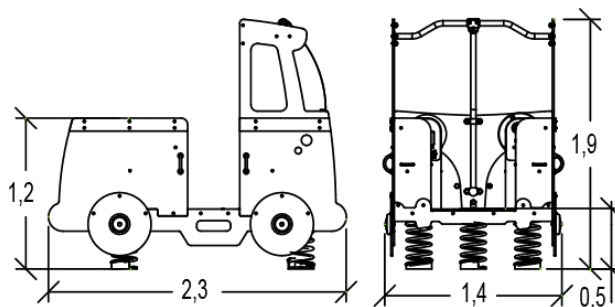
0,6m



1 = 2,3m  
2 = 1,4m  
3 = 1,9m



Discapacidad motriz  
Discapacidad sensorial  
Discapacidad mental



Funciones Lúdicas : 9

imaginar



x1

encontrarse



x1

descansar



x1

manipular



x2

equilibrio



x1

reflexionar



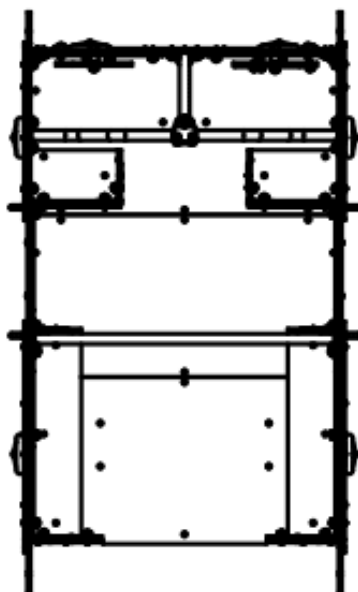
x1

estimulación táctil





x2

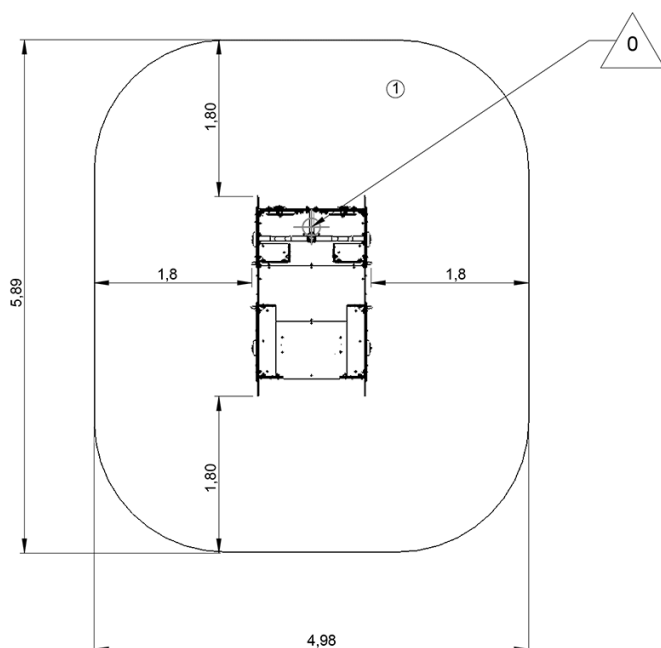
## Elementos constituyentes





## Instalación del equipamiento

Zona de impacto: Superficie de suelo mínima requerida

-  Zona de impacto
-  Espacio libre



1	 0,6m	 27,5m <sup>2</sup>
---	--	--



2



5h00



0m<sup>3</sup>



27.5m<sup>2</sup>



283kg



13kg

