



2+



2



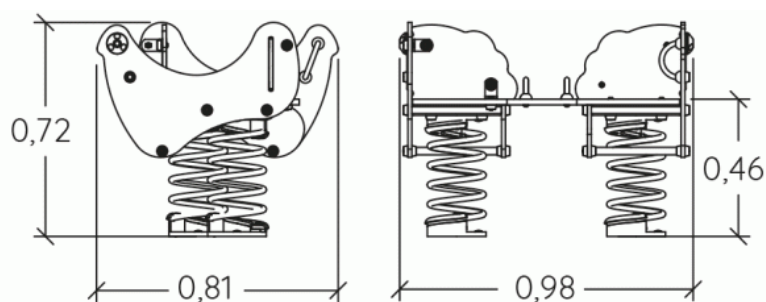
0,6m



1 = 0,98m
2 = 0,81m
3 = 0,72m



Discapacidad motriz
Discapacidad sensorial
Discapacidad mental



Funciones Lúdicas : 4

imaginar



x1

encontrarse



x1

columpiarse



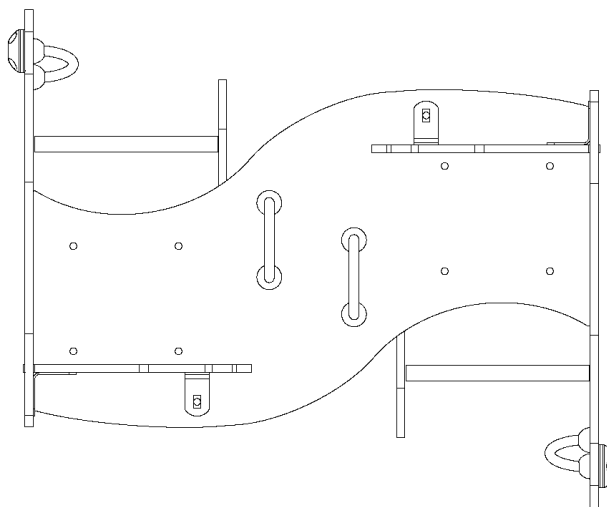
x1

equilibrio





x1

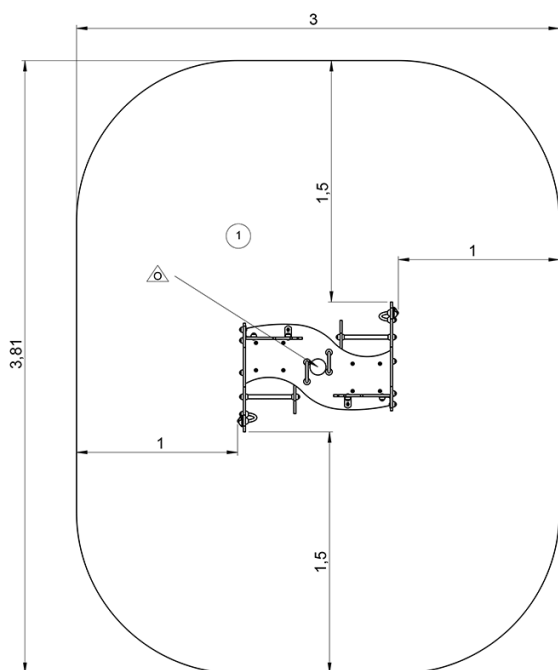
Elementos constituyentes





Instalación del equipamiento

Zona de impacto: Superficie de suelo mínima requerida

-  Zona de impacto
-  Espacio libre



		
1	0,6m	9,5m ²



1



01h00



0m³



9.5m²



62kg



11kg

