



2+



1



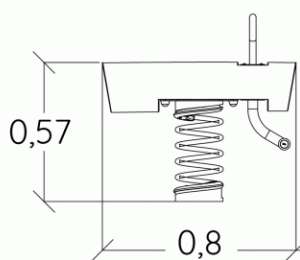
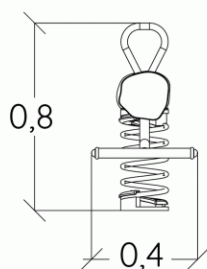
0,6m



1 = 0,8m  
2 = 0,4m  
3 = 0,8m



Discapacidad motriz  
Discapacidad sensorial  
Discapacidad mental



## Funciones Lúdicas : 2

columpiarse



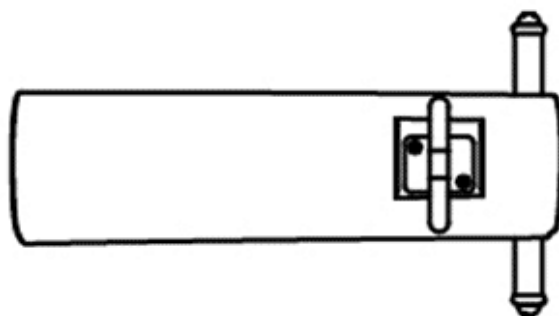
x1

equilibrio





x1

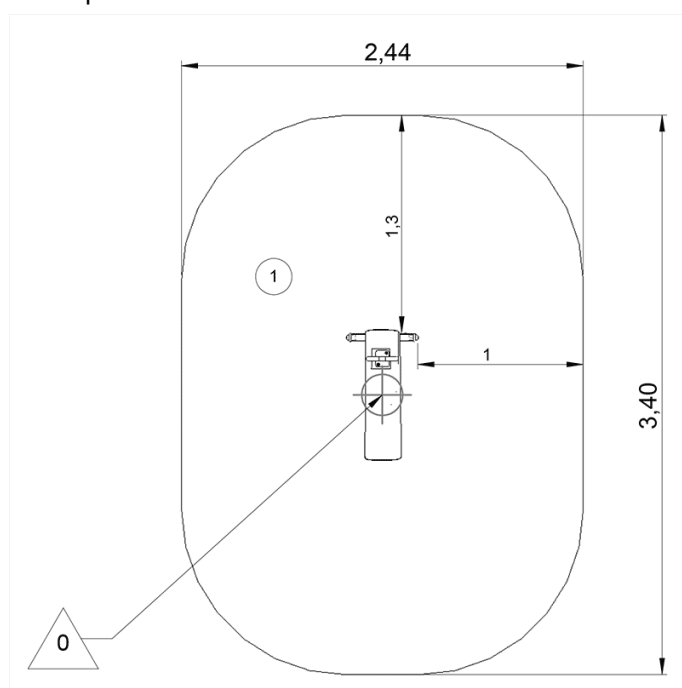
## Elementos constituyentes





## Instalación del equipamiento

Zona de impacto: Superficie de suelo mínima requerida

-  Zona de impacto
-  Espacio libre



|   |   |   |
|---|---|---|
|   |  |  |
| 1 | 0,60m   | 7,5m <sup>2</sup>   |



2



02h15



0.02m<sup>3</sup>



7.5m<sup>2</sup>



101kg



80kg

