



2+



4



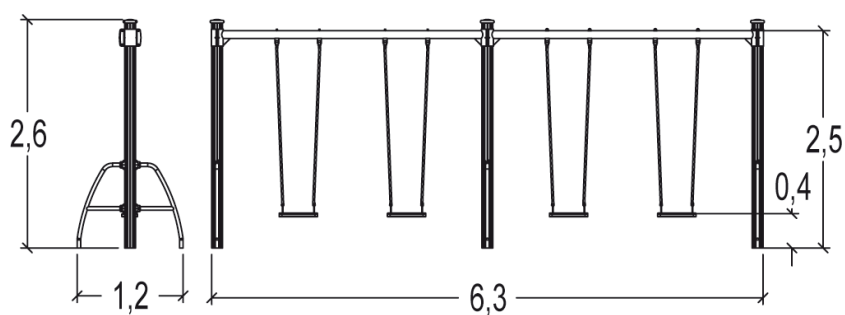
1,4m



1 = 6,3m
2 = 1,2m
3 = 2,6m



Discapacidad motriz
Discapacidad sensorial
Discapacidad mental



Funciones Lúdicas : 2

encontrarse

columpiarse

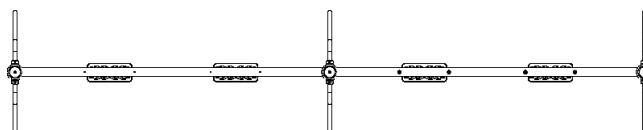


x1





x1

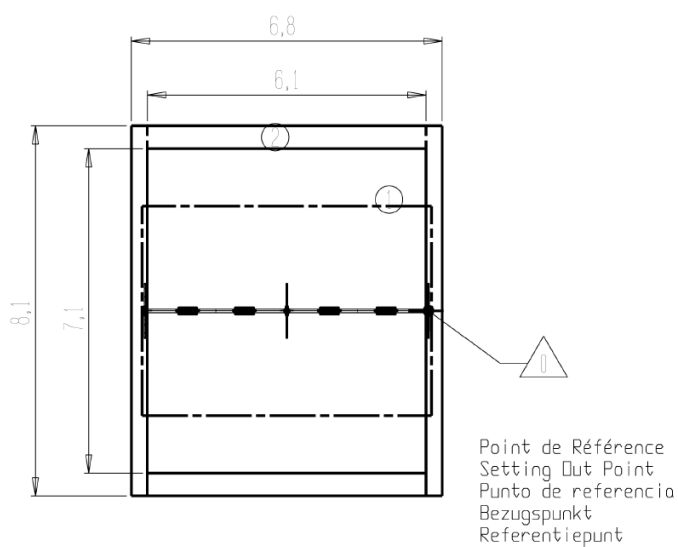
Elementos constituyentes



Instalación del equipamiento

Zona de impacto: Superficie de suelo mínima requerida

-  Zona de impacto
-  Espacio libre



1	1,4m	43,5m ²
2	1,4m	55m ²



2



03h00



1.3m³



43.5m²



148kg



30kg

EN

1176